

# **The Scheduling Power of the EU Council Presidency**

Online appendix

Frank M. Häge

University of Limerick

- 1. Table of estimation results from mixed effects regressions**
- 2. Additional figures for variance component analyses**
- 3. Replication analysis with lowess bandwidth set to 0.2**
- 4. Replication analysis with lowess bandwidth set to 0.8**

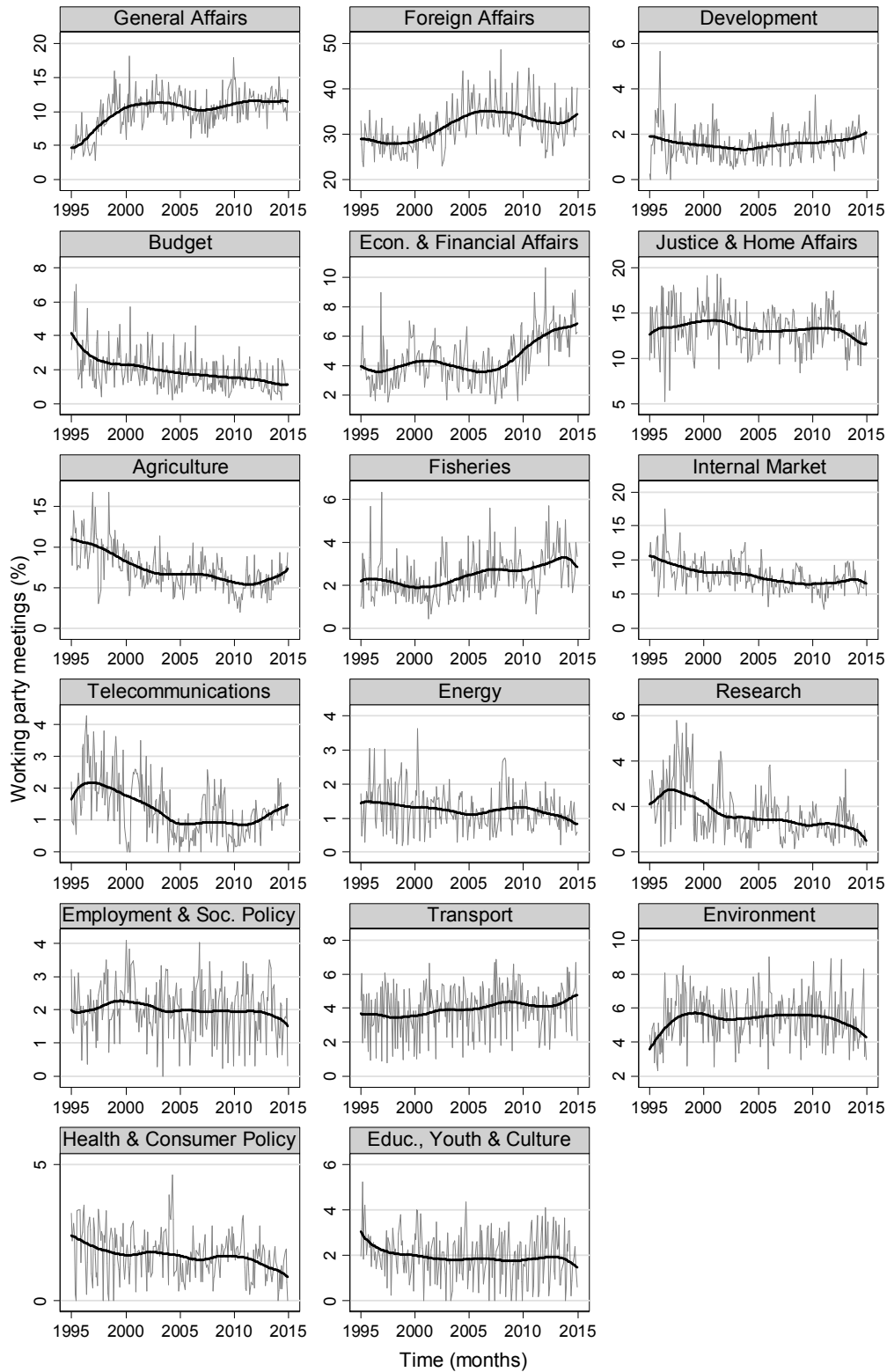
## 1. Table of estimation results from mixed effects regressions

**Table A1** Mixed effects regressions of percentage of working party meeting time by policy area

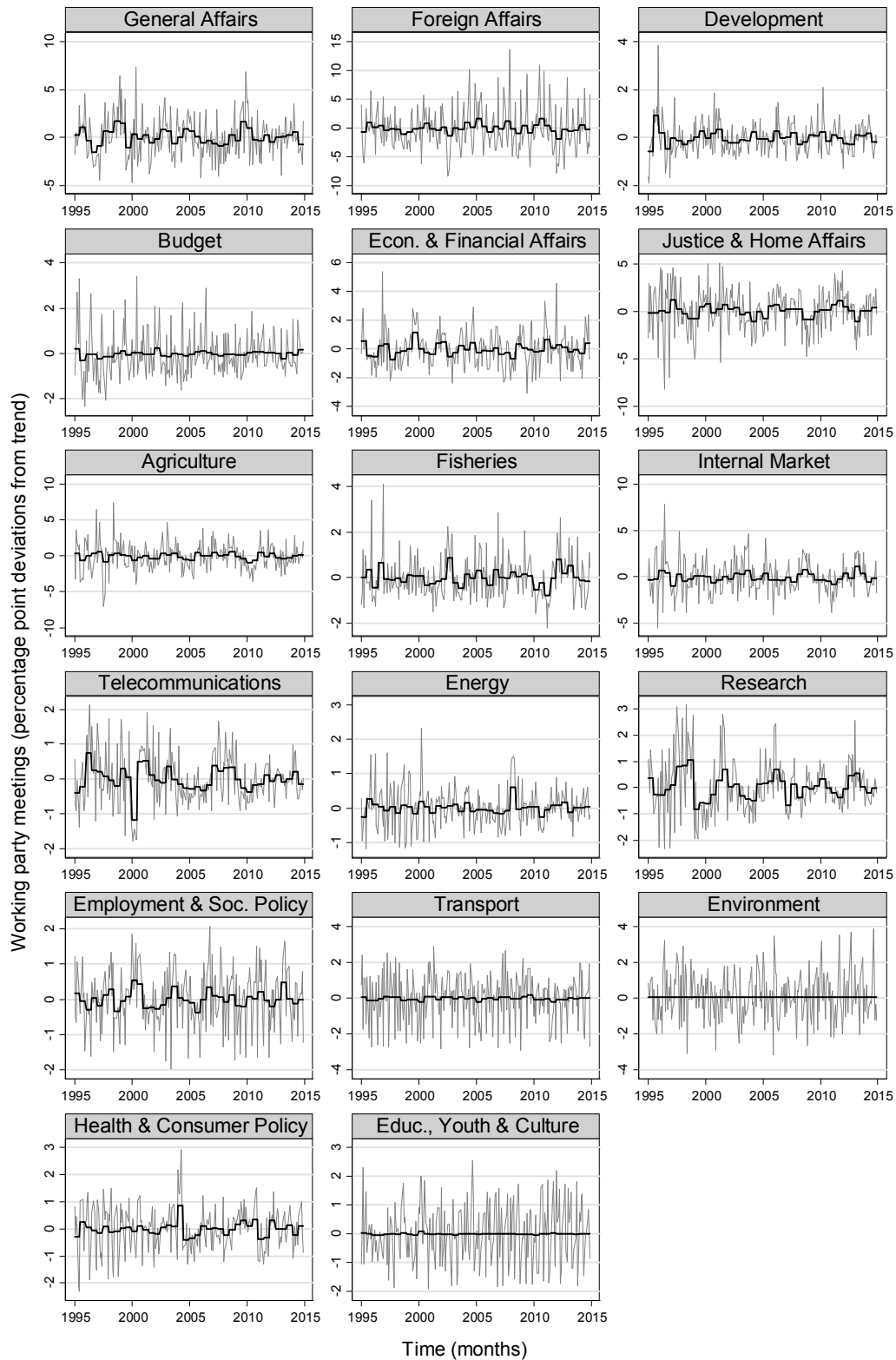
Policy area	Fixed part	Random part (standard deviations)		
	Intercept $\alpha$	Presidency $\sigma_{\gamma}$	Month $\sigma_{\delta}$	Error $\sigma_{\epsilon}$
General Affairs	0.07 -0.67, 0.82	0.94 0.66, 1.33	1.10 0.68, 1.79	1.61 1.45, 1.79
Foreign Affairs	-0.07 -1.76, 1.61	1.05 0.66, 1.66	2.74 1.74, 4.32	2.43 2.19, 2.70
Development	-0.02 -0.20, 0.16	0.32 0.22, 0.46	0.21 0.11, 0.39	0.58 0.52, 0.64
Budget	-0.03 -0.46, 0.40	0.20 0.09, 0.41	0.70 0.44, 1.12	0.67 0.60, 0.74
Economic & Financial Affairs	-0.01 -0.33, 0.31	0.53 0.35, 0.80	0.39 0.21, 0.73	1.11 1.00, 1.23
Justice & Home Affairs	0.06 -0.49, 0.62	0.82 0.51, 1.32	0.71 0.38, 1.33	2.00 1.80, 2.23
Agriculture	-0.05 -0.55, 0.44	0.63 0.37, 1.08	0.67 0.37, 1.20	1.69 1.52, 1.88
Fisheries	0.01 -0.28, 0.29	0.43 0.30, 0.61	0.39 0.23, 0.66	0.75 0.67, 0.83
Internal Market	-0.03 -0.52, 0.46	0.66 0.41, 1.05	0.66 0.37, 1.16	1.59 1.43, 1.77
Telecommunications	0.00 -0.22, 0.22	0.39 0.29, 0.53	0.29 0.17, 0.49	0.58 0.52, 0.64
Energy	0.01 -0.18, 0.19	0.21 0.14, 0.33	0.28 0.17, 0.46	0.48 0.43, 0.53
Research	0.04 -0.16, 0.24	0.53 0.38, 0.73	0.07 0.00, 3.26	0.84 0.76, 0.93
Employment & Social Policy	0.01 -0.33, 0.35	0.29 0.20, 0.42	0.55 0.35, 0.87	0.55 0.49, 0.61
Transport	-0.02 -0.61, 0.58	0.20 0.06, 0.71	0.98 0.62, 1.55	0.96 0.87, 1.07
Environment	0.06 -0.38, 0.51	0.00 0.00, 3525570.66	0.71 0.44, 1.17	1.13 1.03, 1.24
Health & Consumer Policy	0 -0.27, 0.27	0.31 0.21, 0.47	0.40 0.24, 0.65	0.64 0.57, 0.71
Education, Youth & Culture	-0.01 -0.43, 0.41	0.10 0.01, 1.84	0.69 0.43, 1.09	0.77 0.69, 0.85

## 2. Additional figures for variance component analyses

**Figure A1** Percentage of working party meeting time and estimated trends by policy area, 1995-2014



**Figure A2 Observed vs. fitted values based on mixed effects regression, 1995-2014**

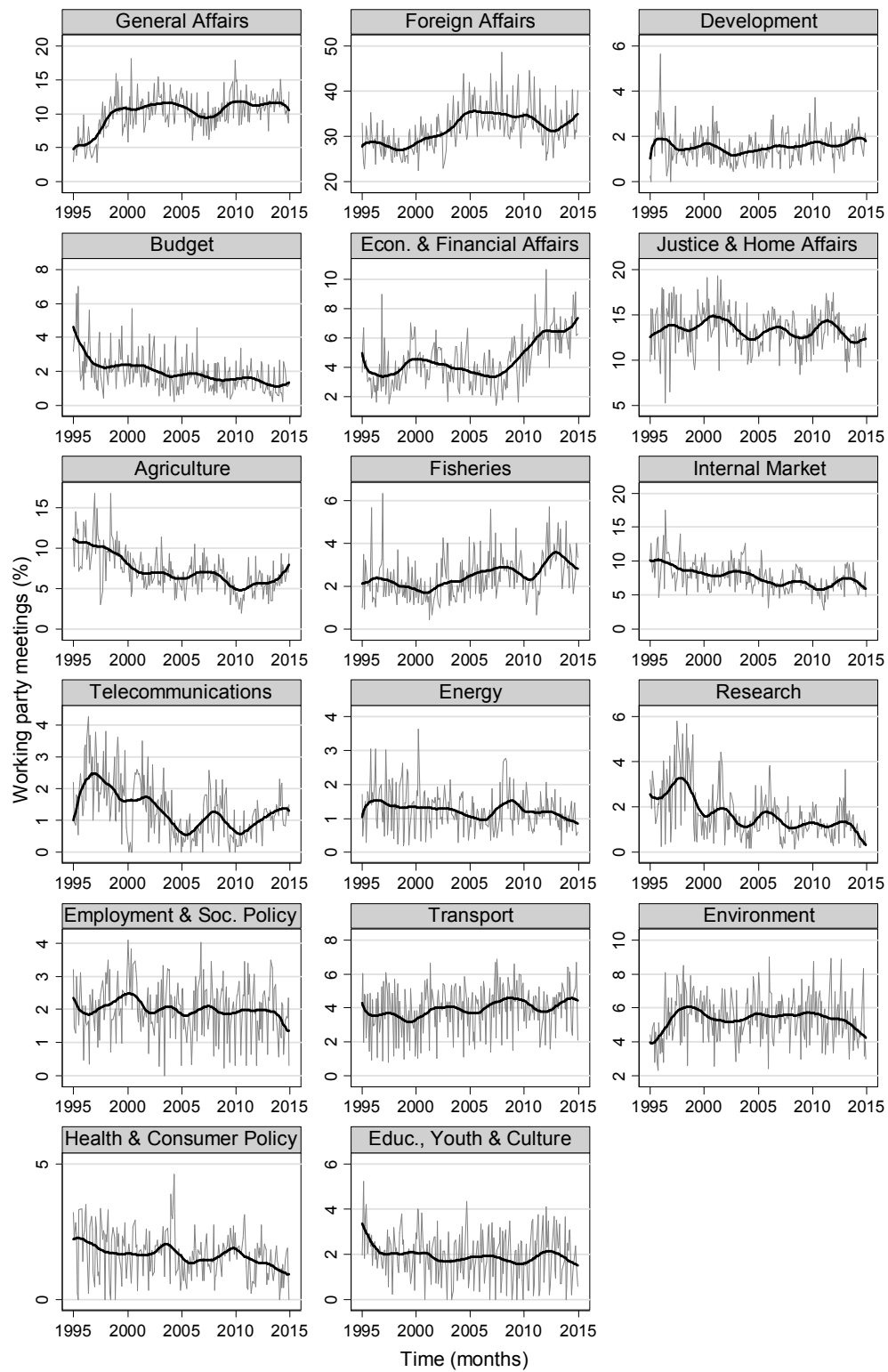


### 3. Replication analysis with lowess bandwidth set to 0.2

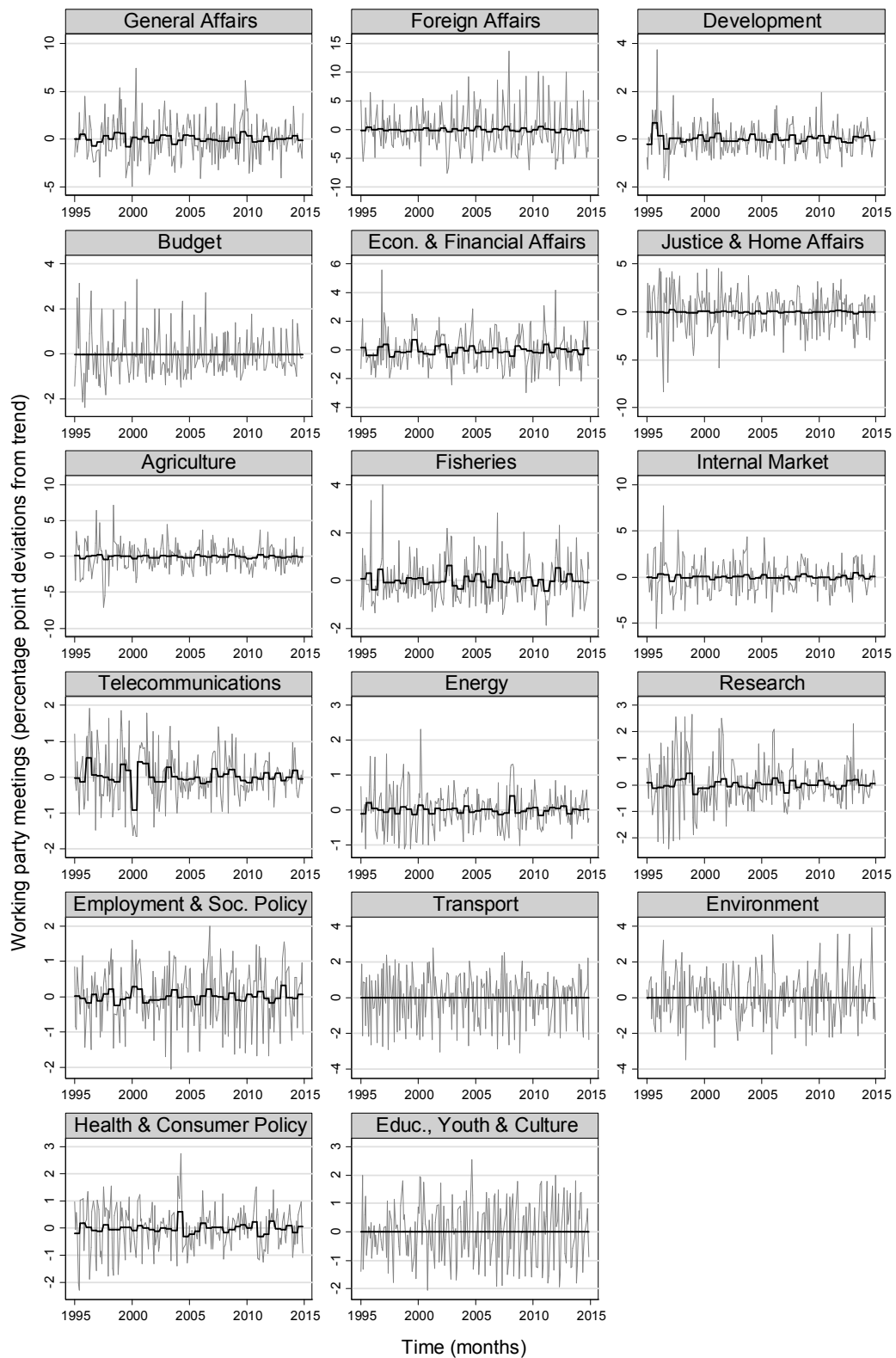
**Table A2** Mixed effects regressions of percentage of working party meeting time by policy area

Policy area	Fixed part	Random part (standard deviations)		
	Intercept $\alpha$	Presidency $\sigma_{\gamma}$	Month $\sigma_{\delta}$	Error $\sigma_{\epsilon}$
General Affairs	0.02 -0.66, 0.70	0.57 0.31, 1.03	1.05 0.66, 1.67	1.61 1.45, 1.80
Foreign Affairs	-0.02 -1.60, 1.56	0.55 0.19, 1.65	2.60 1.68, 4.02	2.42 2.18, 2.69
Development	0.01 -0.15, 0.17	0.24 0.15, 0.39	0.19 0.11, 0.36	0.58 0.52, 0.64
Budget	-0.02 -0.43, 0.39	0.02 0.00, 4.04e+23	0.67 0.43, 1.04	0.68 0.61, 0.75
Economic & Financial Affairs	-0.02 -0.32, 0.27	0.41 0.24, 0.71	0.37 0.20, 0.69	1.11 1.00, 1.23
Justice & Home Affairs	0.00 -0.48, 0.49	0.27 0.02, 3.78	0.67 0.36, 1.23	2.01 1.81, 2.23
Agriculture	-0.03 -0.48, 0.42	0.36 0.11, 1.20	0.63 0.35, 1.11	1.69 1.52, 1.88
Fisheries	0.01 -0.25, 0.27	0.32 0.21, 0.51	0.37 0.22, 0.61	0.75 0.67, 0.83
Internal Market	0.02 -0.42, 0.46	0.38 0.14, 1.02	0.62 0.35, 1.08	1.60 1.44, 1.78
Telecommunications	0.02 -0.19, 0.22	0.30 0.21, 0.43	0.28 0.17, 0.46	0.58 0.52, 0.64
Energy	0.01 -0.17, 0.18	0.17 0.09, 0.29	0.26 0.16, 0.43	0.48 0.43, 0.53
Research	0.01 -0.13, 0.15	0.26 0.13, 0.50	0.07 0.00, 2.72	0.84 0.75, 0.93
Employment & Social Policy	0.00 -0.32, 0.32	0.21 0.12, 0.35	0.52 0.33, 0.81	0.55 0.49, 0.61
Transport	-0.01 -0.57, 0.55	0.00 0.00, 3.10e+242	0.92 0.60, 1.44	0.95 0.86, 1.04
Environment	0.02 -0.41, 0.44	0.00 Not estimable	0.68 0.42, 1.08	1.10 1.00, 1.22
Health & Consumer Policy	0.00 -0.25, 0.25	0.25 0.15, 0.41	0.38 0.23, 0.61	0.64 0.57, 0.71
Education, Youth & Culture	-0.01 -0.41, 0.39	0.00 Not estimable	0.65 0.42, 1.02	0.76 0.69, 0.83

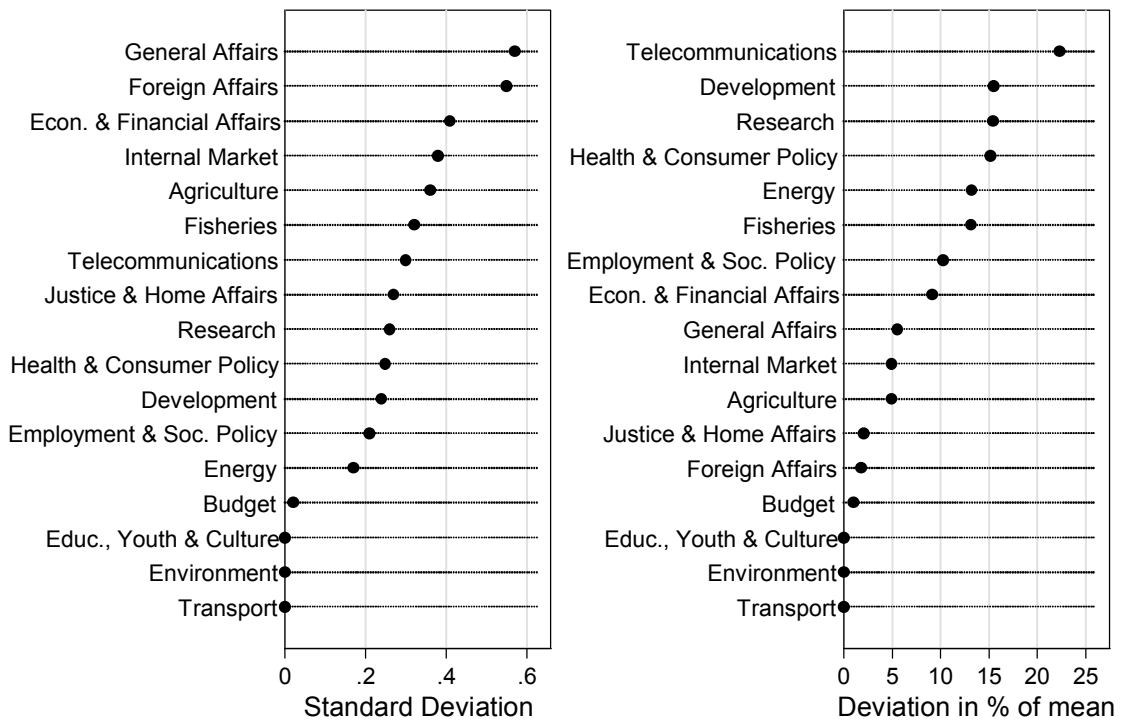
**Figure A3 Percentage of working party meeting time and estimated trends by policy area, 1995-2014**



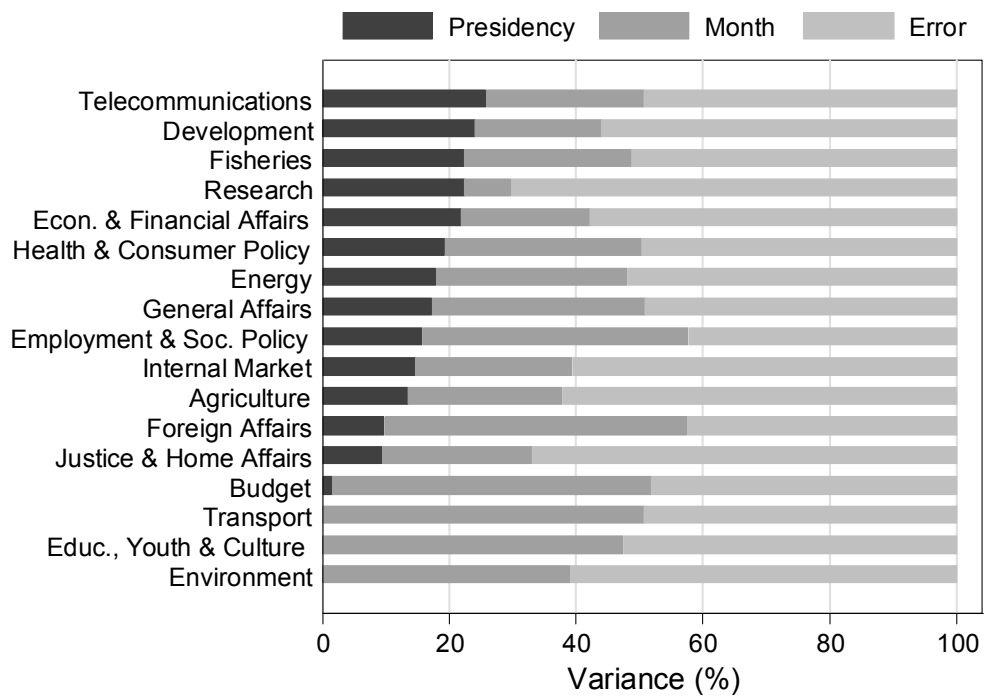
**Figure A4** Observed vs. fitted values based on mixed effects regression, 1995-2014



**Figure A5 Estimated standard deviations of Presidency period random effects**



**Figure A6 Variance components estimates by policy area, 1995-2014**



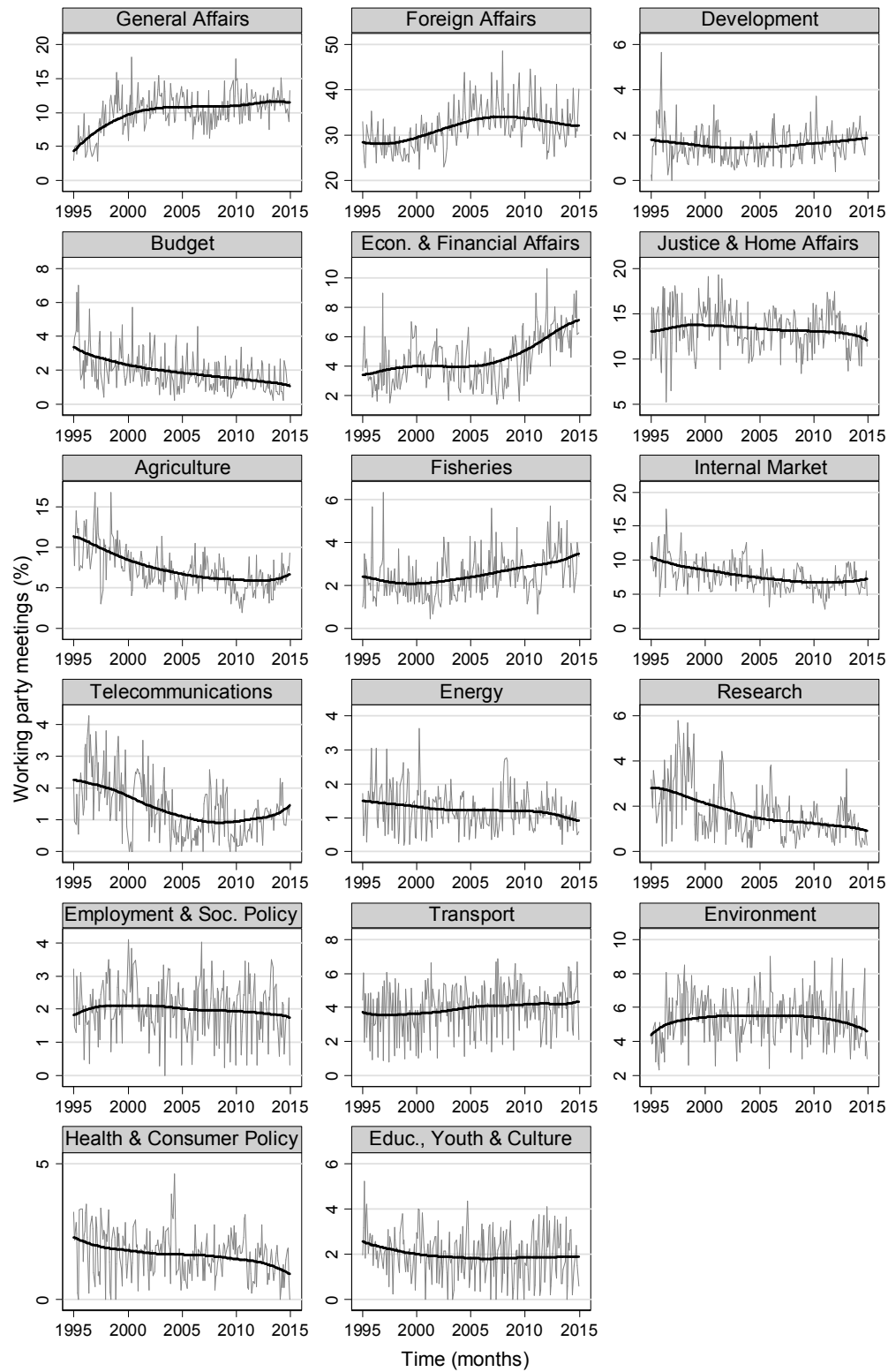


#### 4. Replication analysis with lowess bandwidth set to 0.8

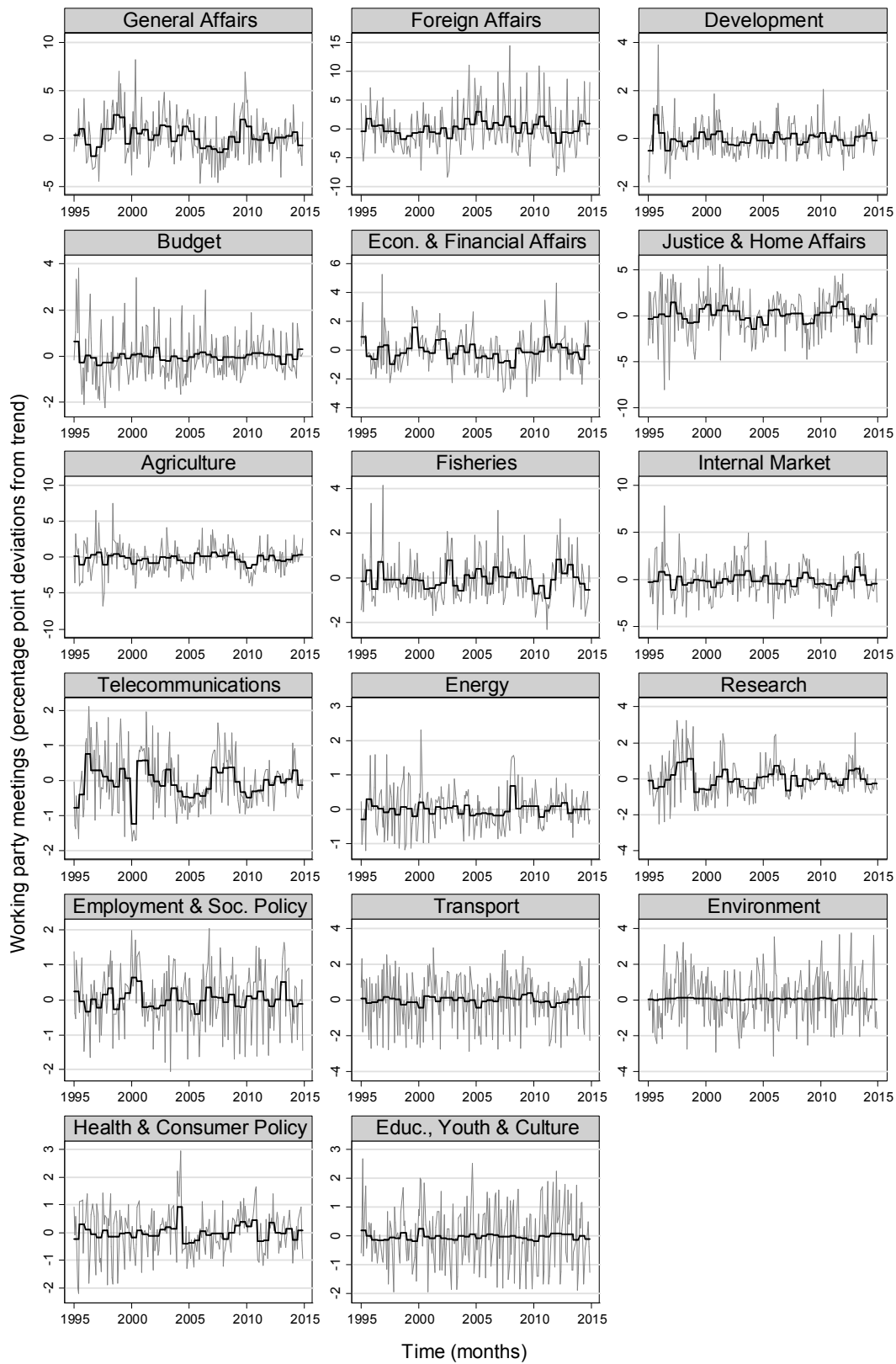
**Table A3** Mixed effects regressions of percentage of working party meeting time by policy area

Policy area	Fixed part	Random part (standard deviations)		
	Intercept $\alpha$	Presidency $\sigma_{\gamma}$	Month $\sigma_{\delta}$	Error $\sigma_{\epsilon}$
General Affairs	0.21 -0.54, 0.96	1.16 0.86, 1.57	1.06 0.66, 1.69	1.61 1.45, 1.79
Foreign Affairs	0.14 -1.51, 1.78	1.44 1.02, 2.04	2.63 1.70, 4.07	2.43 2.19, 2.71
Development	-0.02 -0.20, 0.15	0.33 0.23, 0.47	0.20 0.11, 0.37	0.58 0.52, 0.64
Budget	-0.03 -0.44, 0.39	0.28 0.18, 0.44	0.67 0.43, 1.05	0.67 0.60, 0.74
Economic & Financial Affairs	-0.06 -0.40, 0.27	0.68 0.49, 0.95	0.37 0.20, 0.69	1.11 1.00, 1.23
Justice & Home Affairs	0.08 -0.48, 0.64	0.94 0.63, 1.42	0.67 0.36, 1.25	2.00 1.80, 2.23
Agriculture	-0.16 -0.66, 0.33	0.76 0.49, 1.18	0.64 0.36, 1.13	1.70 1.53, 1.89
Fisheries	-0.04 -0.32, 0.24	0.48 0.35, 0.66	0.36 0.22, 0.61	0.75 0.67, 0.83
Internal Market	-0.11 -0.59, 0.38	0.73 0.48, 1.11	0.63 0.36, 1.10	1.59 1.43, 1.77
Telecommunications	-0.04 -0.27, 0.19	0.45 0.34, 0.60	0.28 0.16, 0.46	0.58 0.52, 0.64
Energy	0.01 -0.18, 0.19	0.23 0.16, 0.34	0.26 0.16, 0.43	0.48 0.43, 0.53
Research	-0.02 -0.22, 0.19	0.54 0.39, 0.75	0.06 0.00, 11.60	0.84 0.76, 0.93
Employment & Social Policy	0.02 -0.31, 0.35	0.30 0.21, 0.44	0.52 0.34, 0.81	0.55 0.49, 0.61
Transport	0.00 -0.57, 0.57	0.31 0.16, 0.59	0.93 0.60, 1.44	0.96 0.87, 1.07
Environment	0.07 -0.35, 0.50	0.14 0.01, 3.79	0.67 0.42, 1.09	1.16 1.04, 1.29
Health & Consumer Policy	0.00 -0.26, 0.27	0.33 0.23, 0.48	0.38 0.24, 0.61	0.64 0.58, 0.71
Education, Youth & Culture	-0.03 -0.43, 0.38	0.19 0.08, 0.47	0.66 0.42, 1.03	0.76 0.69, 0.85

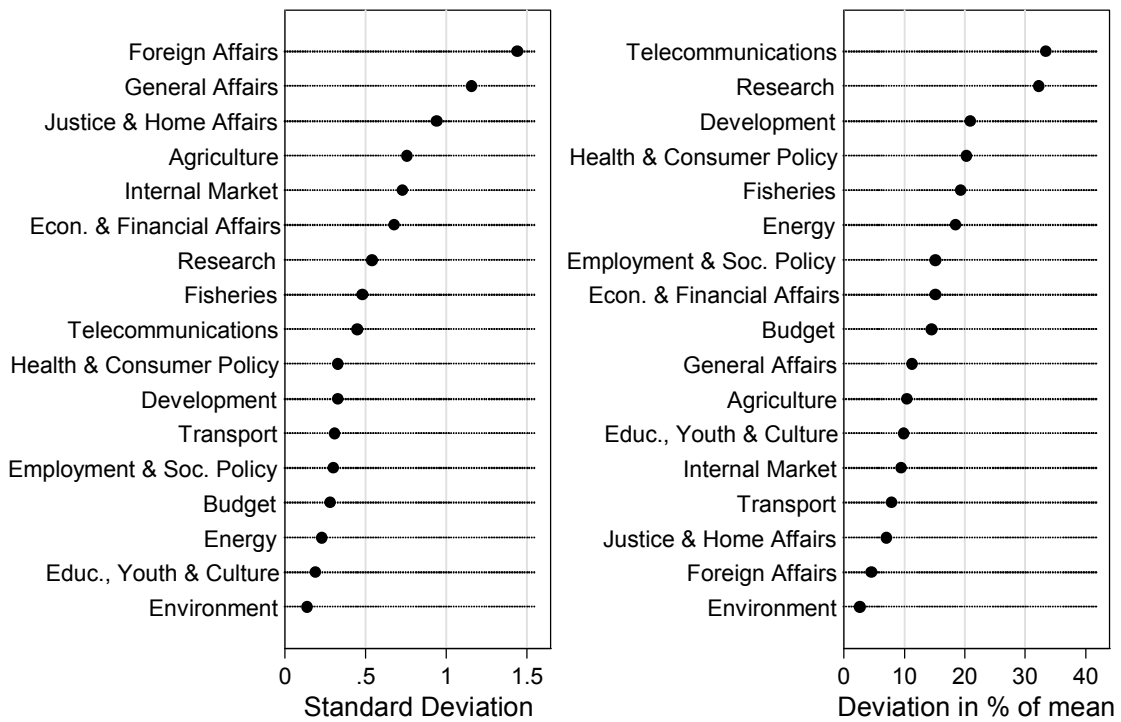
**Figure A7 Percentage of working party meeting time and estimated trends by policy area, 1995-2014**



**Figure A8** Observed vs. fitted values based on mixed effects regression, 1995-2014



**Figure A9** Estimated standard deviations of Presidency period random effects



**Figure A10** Variance components estimates by policy area, 1995-2014

